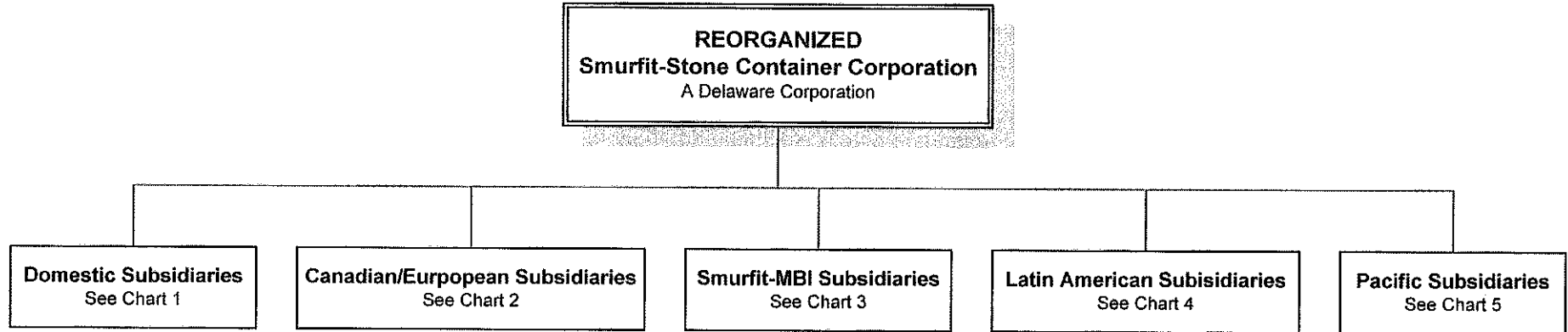
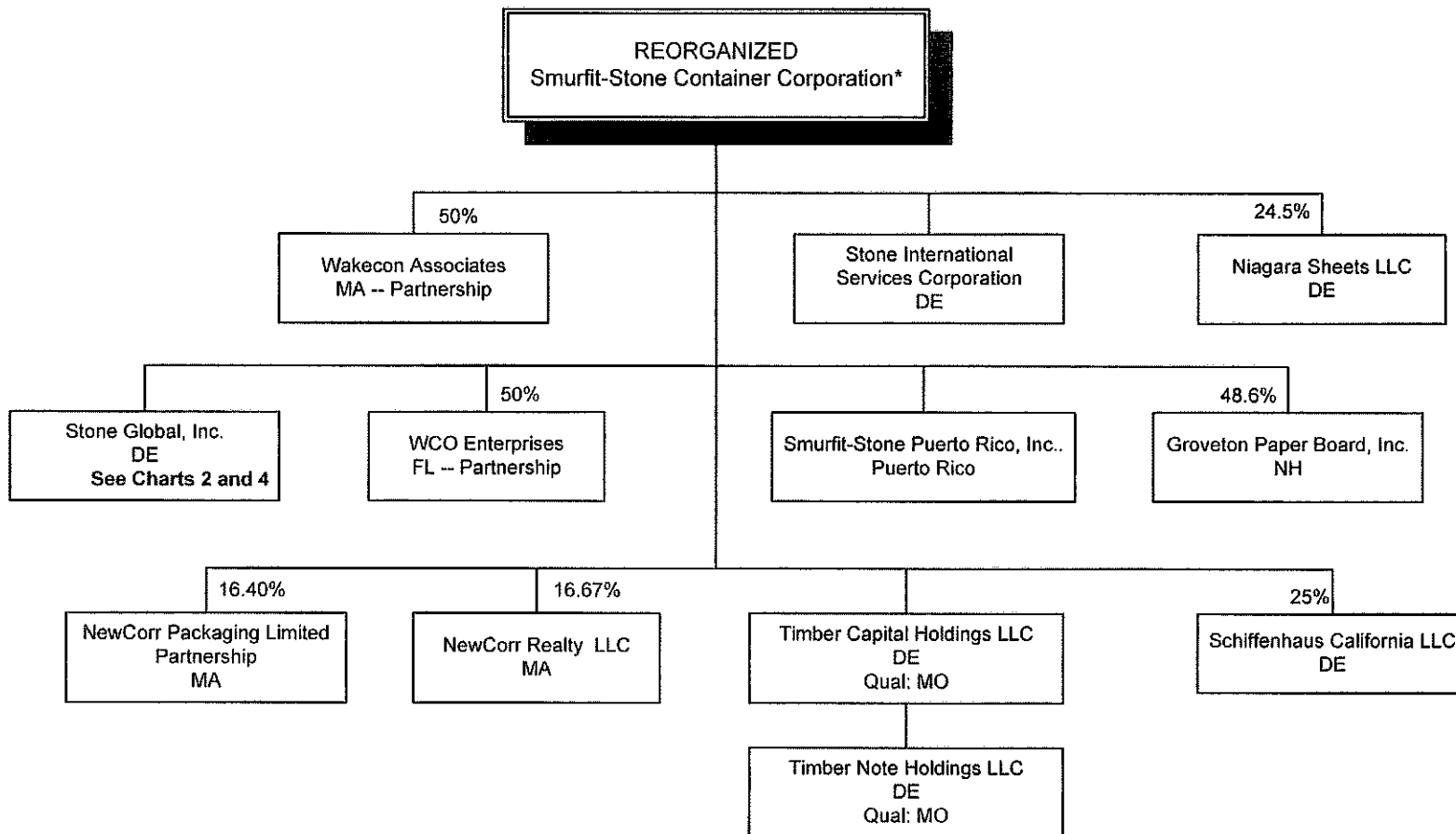


**Smurfit-Stone Container Corporation**  
Parent Company Structure (POST EMERGENCE)

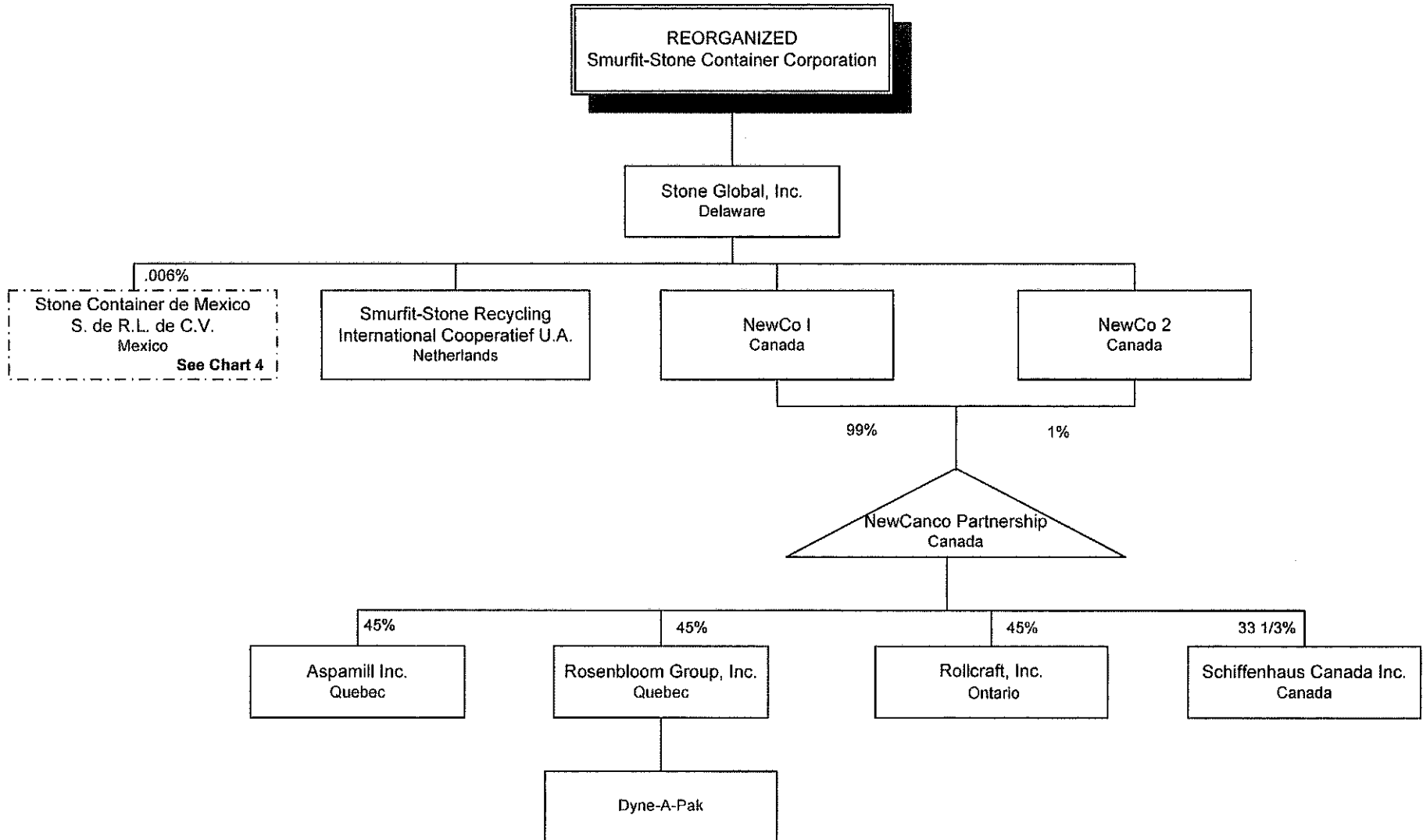


Smurfit-Stone Container Corporation  
 Domestic Subsidiaries (POST EMERGENCE)  
 CHART 1  
 (100% owned unless otherwise specified)



\* Qualified in AL, AR, AZ, CA, CO, CT, FL, GA, IL, IN, IA, KS, KY, LA, MD, MA, MI, MN, MS, MO, MT, NE, NC, ND, NJ, NM, NY, OH, OK, OR, PA, SC, SD, TN, TX, UT, VA, WA, WV, WI

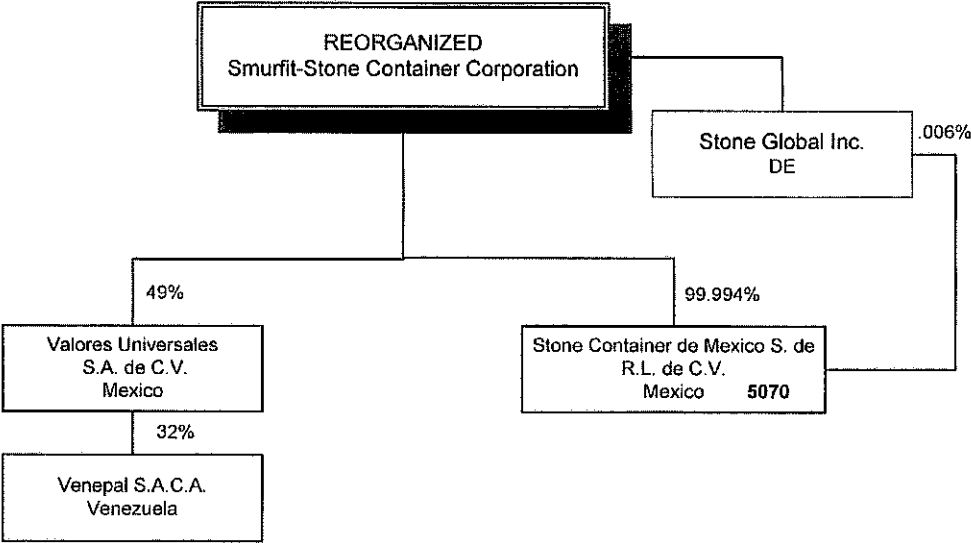
Smurfit-Stone Container Corporation  
 Canadian/European Subsidiaries (POST EMERGENCE)  
 CHART 2  
 (100% owned unless otherwise specified)



Smurfit-Stone Container Corporation  
MBI Subsidiaries (POST EMERGENCE)  
CHART 3  
(100% owned unless otherwise specified)

[All remaining entities transferred to Chart 2]

Smurfit-Stone Container Corporation  
Latin American Subsidiaries (POST EMERGENCE)  
CHART 4  
(100% owned unless otherwise specified)



Smurfit-Stone Container Corporation  
 Pacific Subsidiaries (POST-EMERGENCE)  
 CHART 5  
 (100% owned unless otherwise specified)

