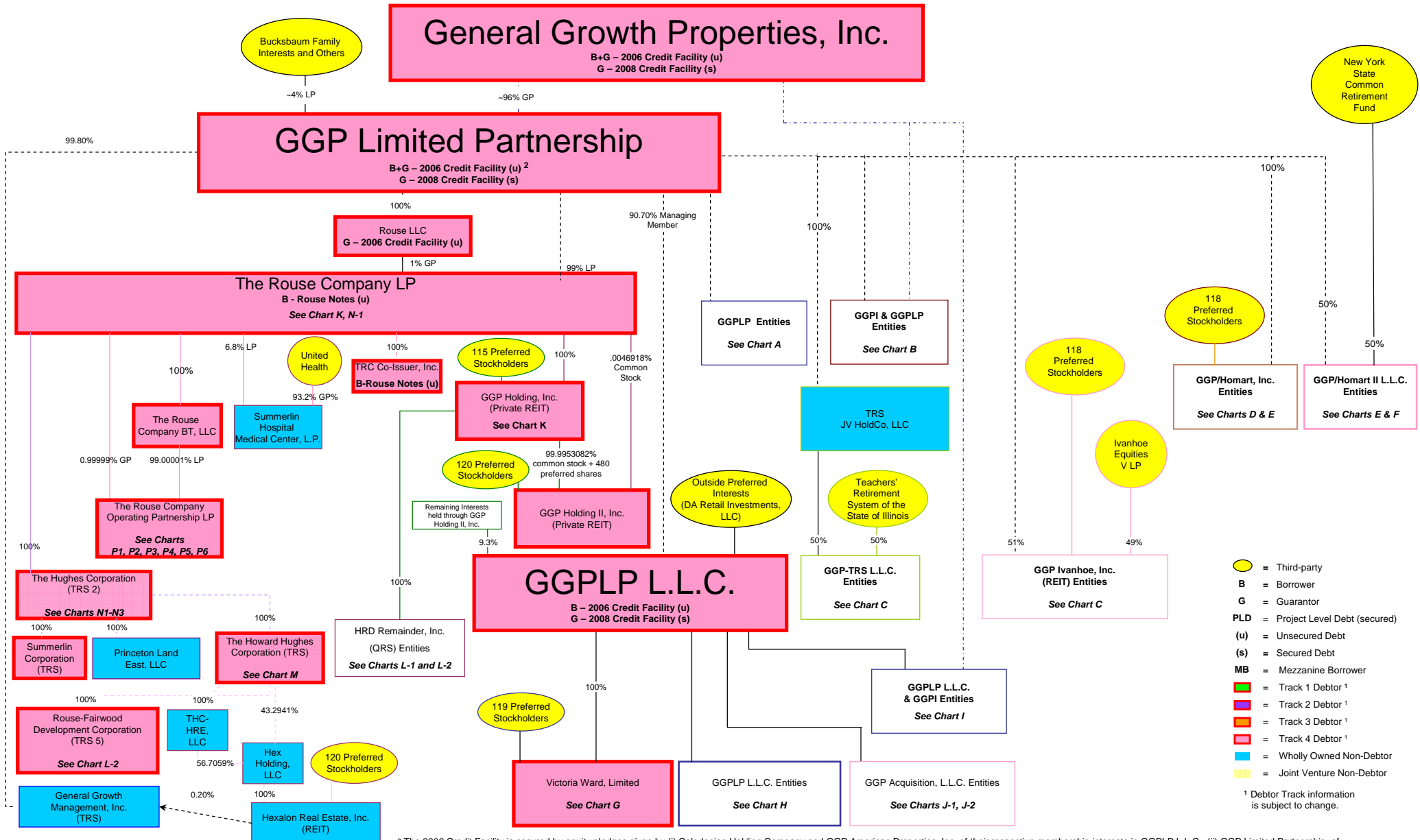


*Entities with bold borders are Debtors filed on April 16, 2009
 Entities with dotted borders are Debtors filed on April 23, 2009



² The 2006 Credit Facility is secured by equity pledges given by (i) Caledonian Holding Company and GGP American Properties, Inc. of their respective membership interests in GGPLP L.L.C., (ii) GGP Limited Partnership, of its respective (a) membership interests in both GGPLP L.L.C. and Rouse LLC, and (b) partnership interest in The Rouse Company LP, and (iii) Rouse LLC, of its respective partnership interest in The Rouse Company LP.

Chart A

*Entities with bold borders are Debtors filed on April 16, 2009
 Entities with dotted borders are Debtors filed on April 23, 2009

GGP Limited Partnership

B+G – 2006 Credit Facility (u)
 G – 2008 Credit Facility (s)

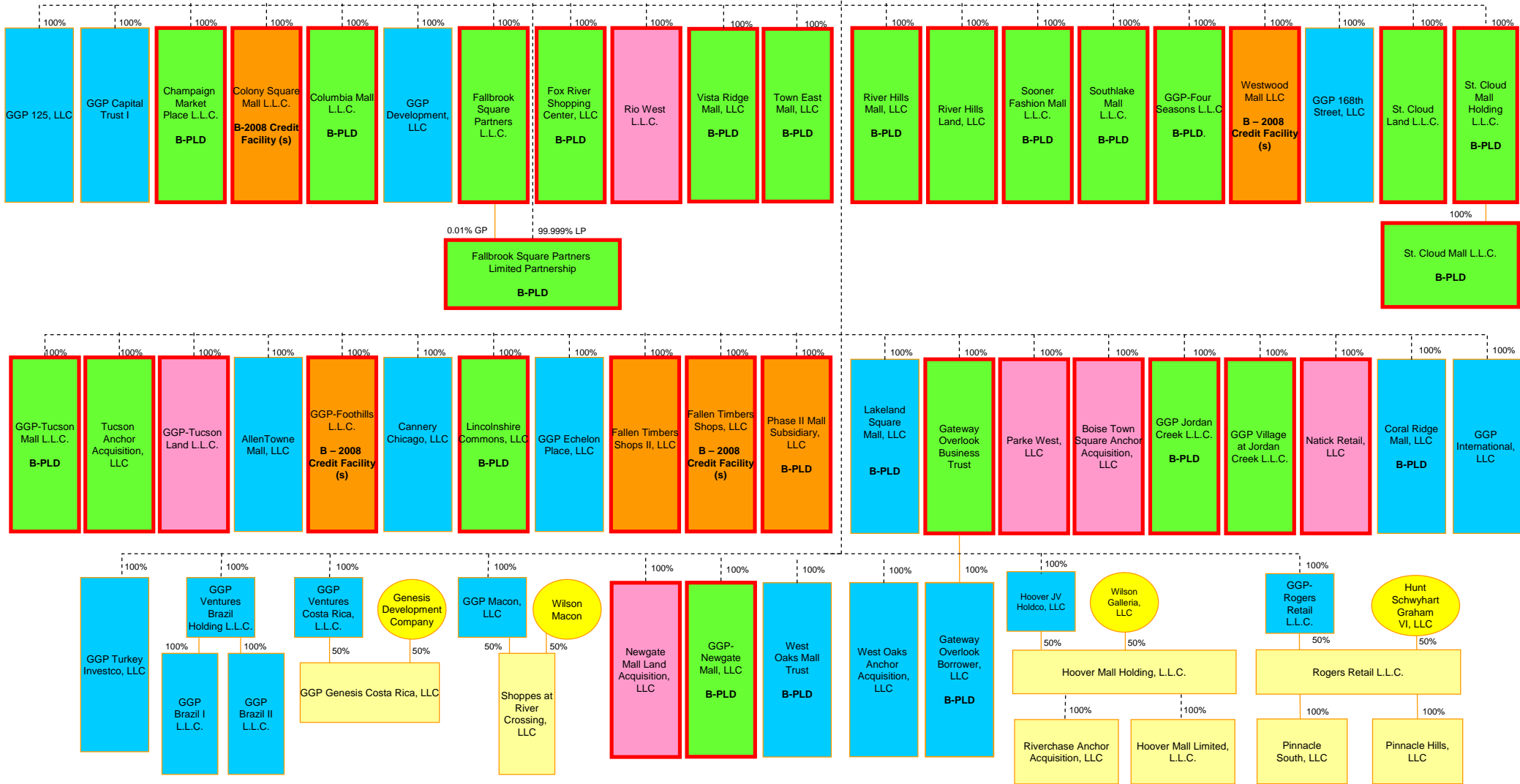


Chart B

*Entities with bold borders are Debtors filed on April 16, 2009
 Entities with dotted borders are Debtors filed on April 23, 2009

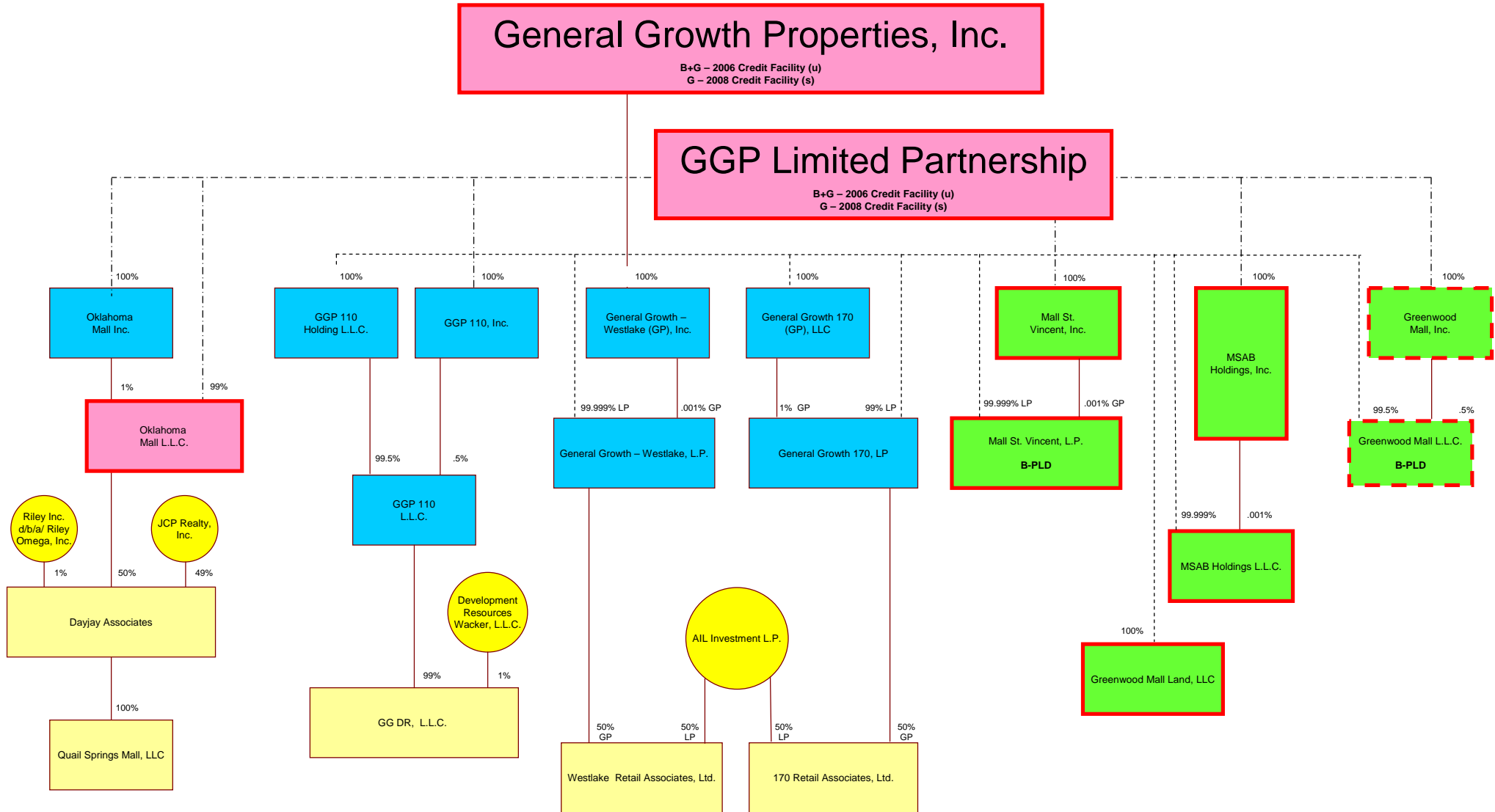


Chart C

*Entities with bold borders are Debtors filed on April 16, 2009
 Entities with dotted borders are Debtors filed on April 23, 2009

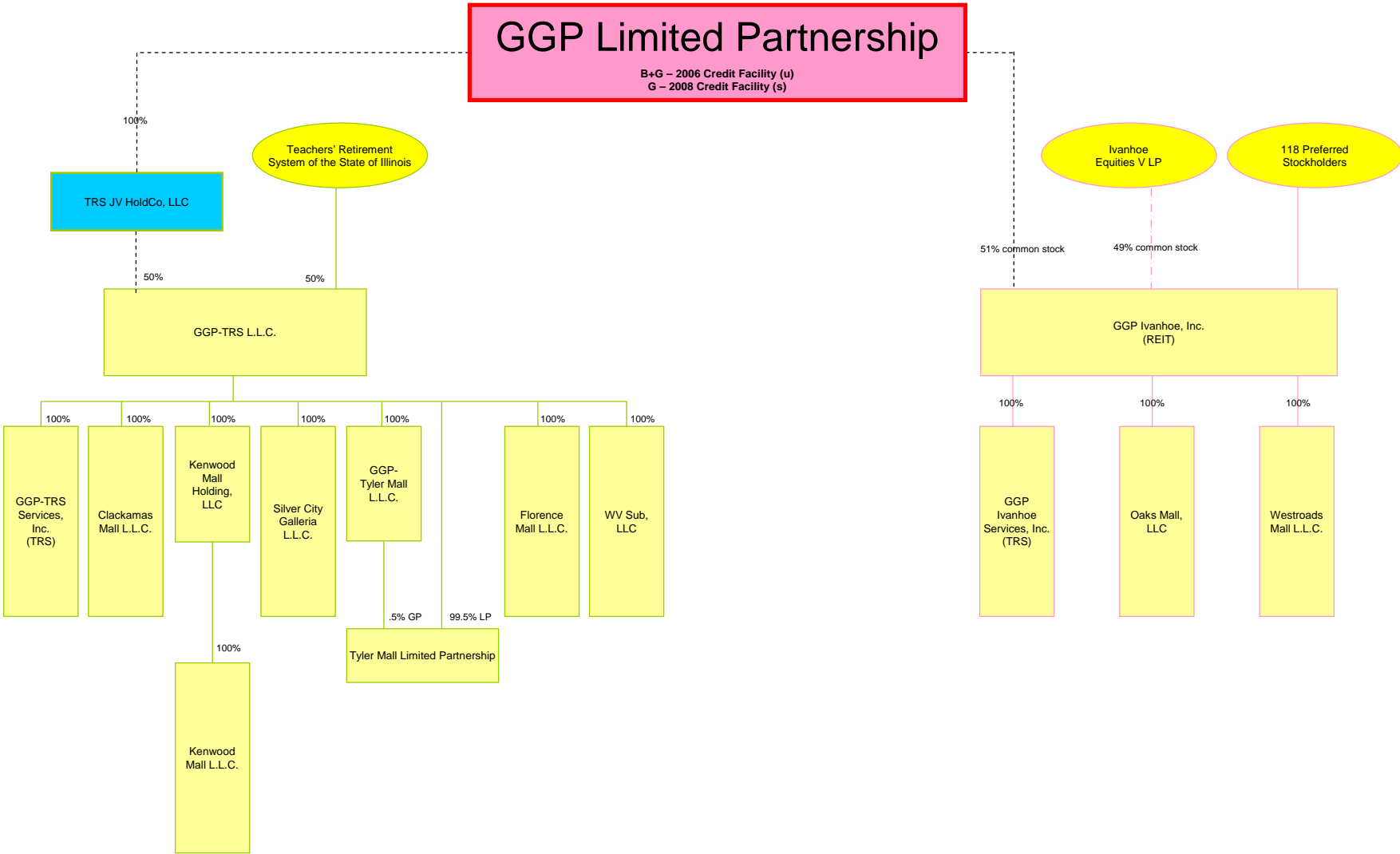
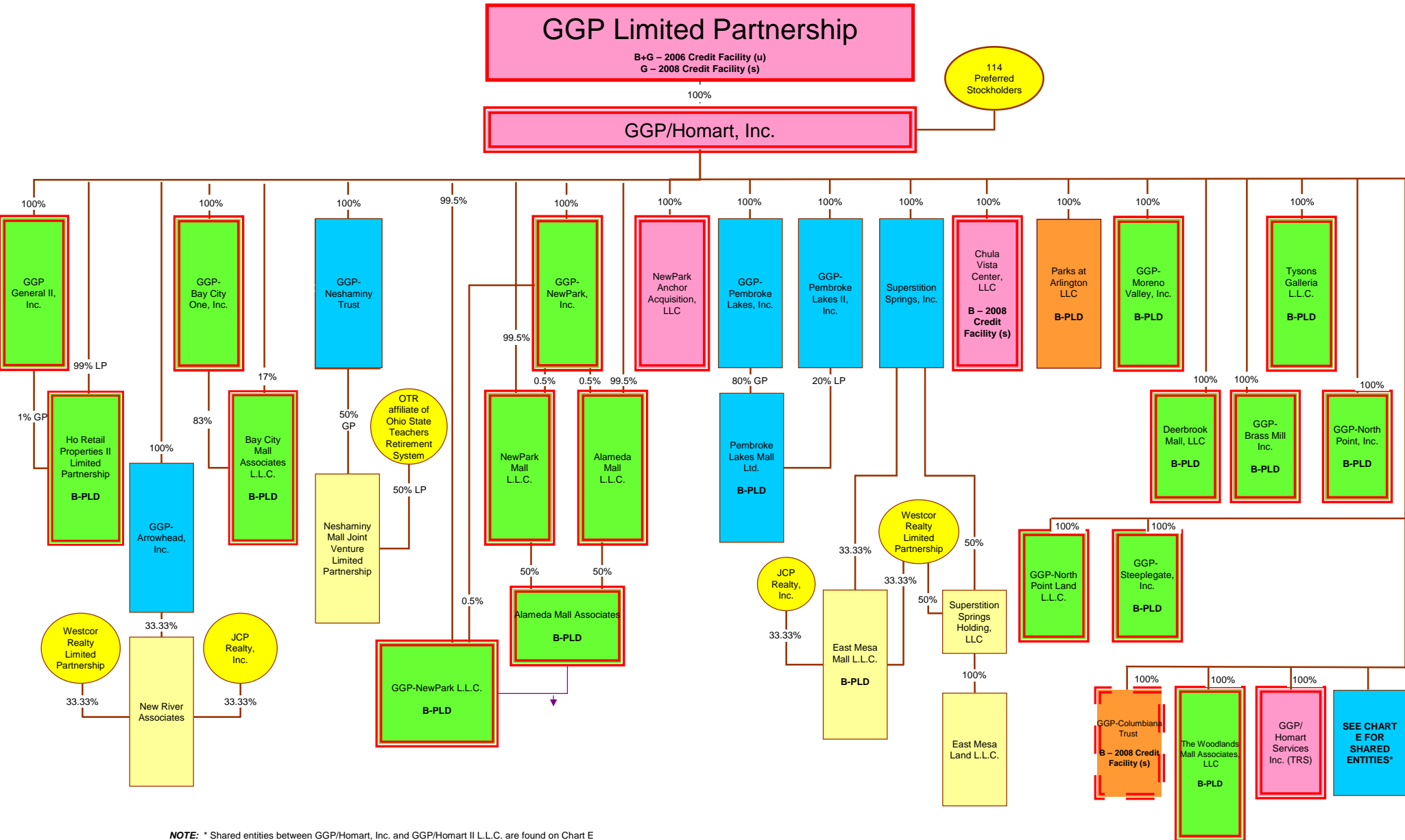


Chart D

*Entities with bold borders are Debtors filed on April 16, 2009
 Entities with dotted borders are Debtors filed on April 23, 2009



NOTE: * Shared entities between GGP/Homart, Inc. and GGP/Homart II L.L.C. are found on Chart E

Chart E

*Entities with bold borders are Debtors filed on April 16, 2009
 Entities with dotted borders are Debtors filed on April 23, 2009

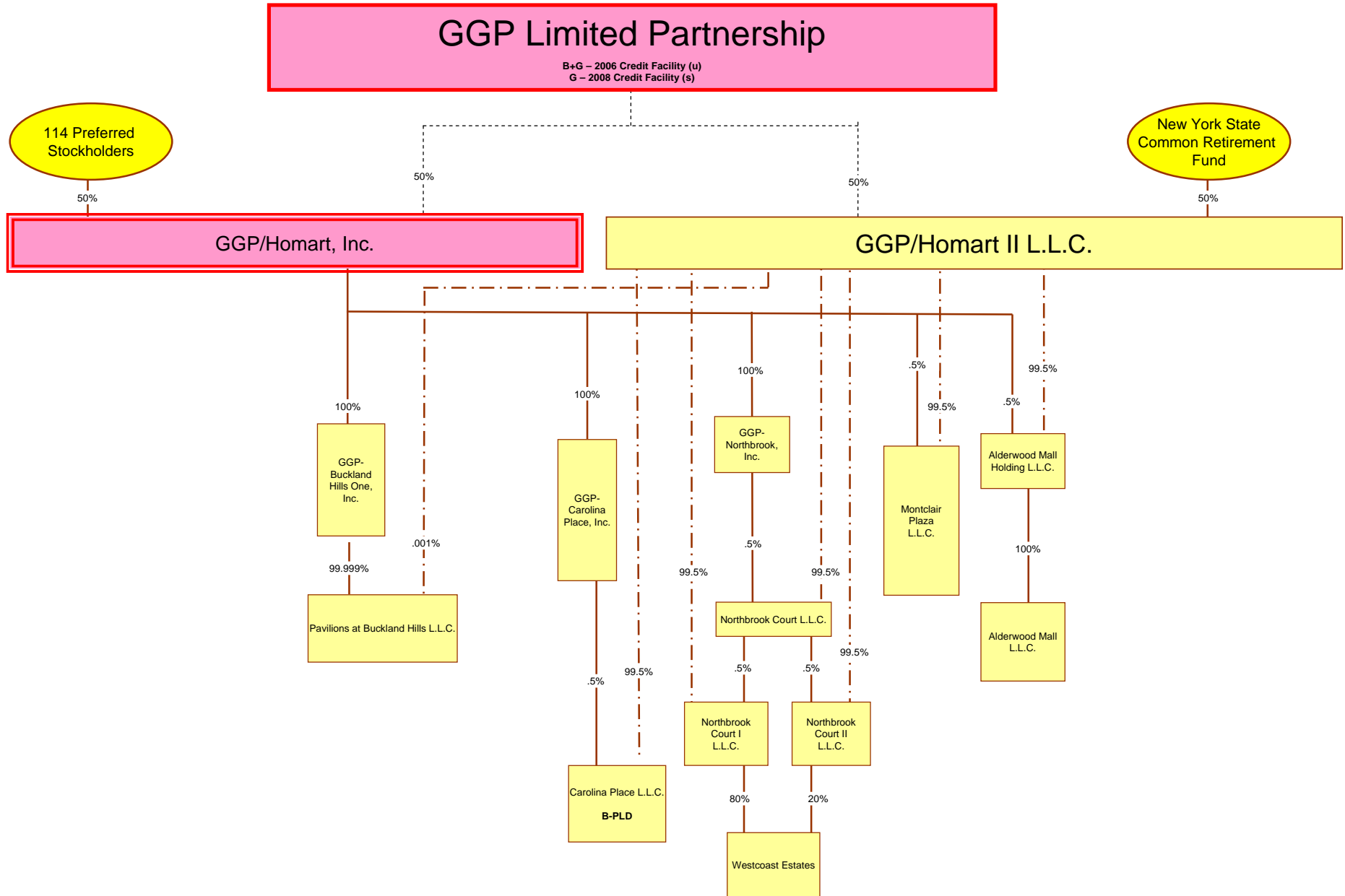
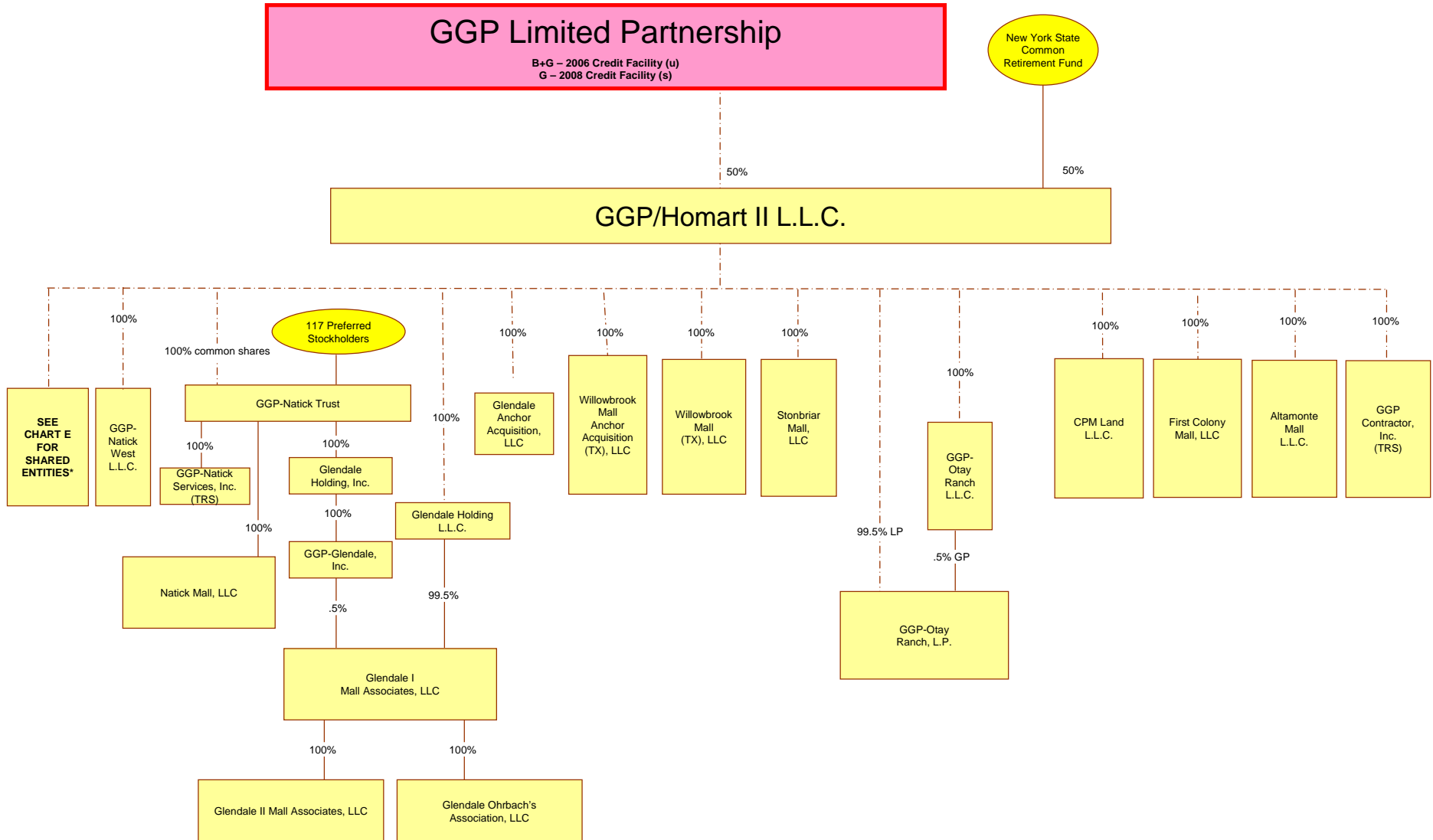


Chart F

*Entities with bold borders are Debtors filed on April 16, 2009
 Entities with dotted borders are Debtors filed on April 23, 2009



NOTE: * Shared entities between GGP/Homart, Inc. and GGP/Homart II L.L.C. are found on Chart E

Chart G

*Entities with bold borders are Debtors filed on April 16, 2009
 Entities with dotted borders are Debtors filed on April 23, 2009

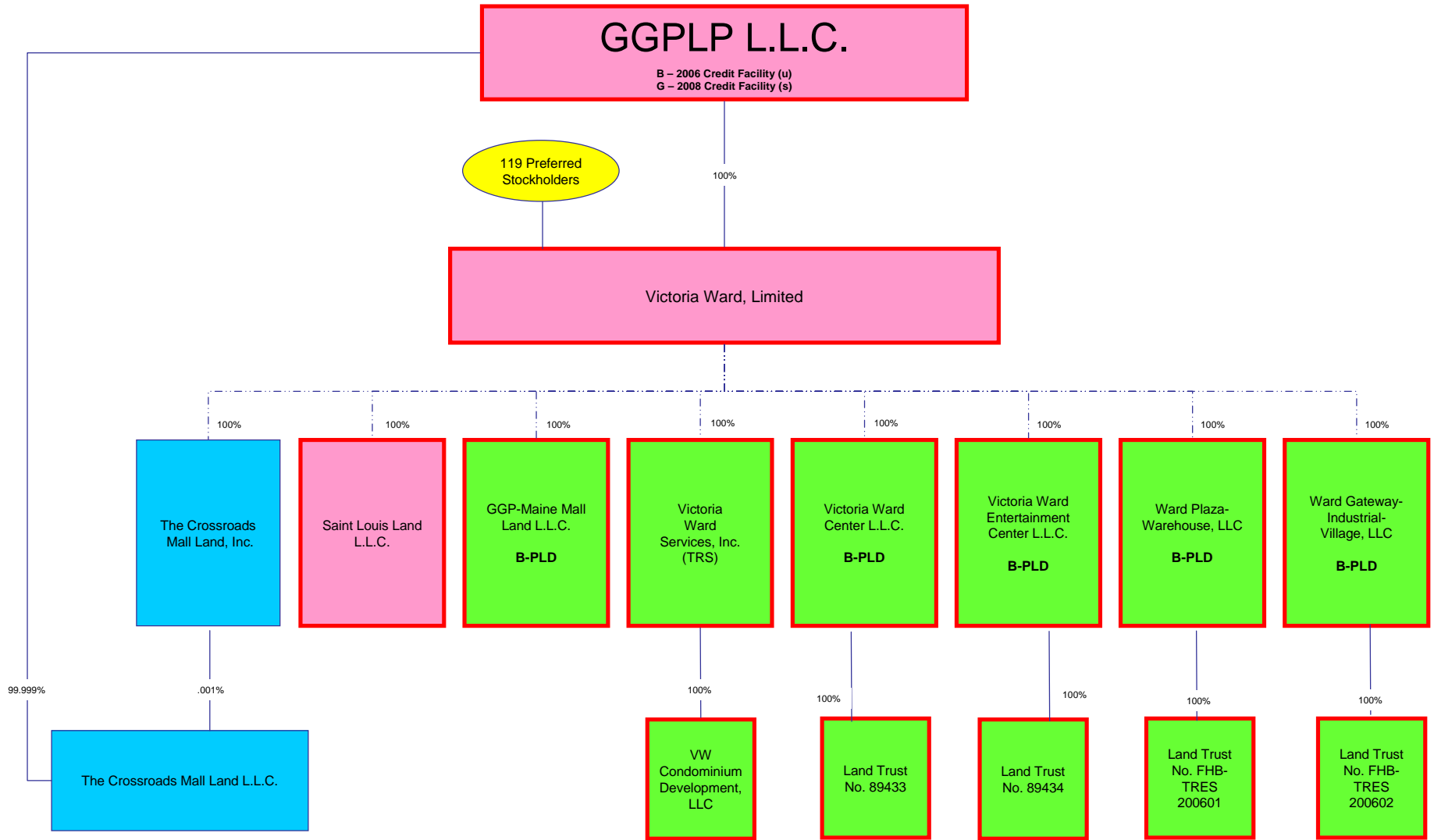


Chart H

*Entities with bold borders are Debtors filed on April 16, 2009
 Entities with dotted borders are Debtors filed on April 23, 2009

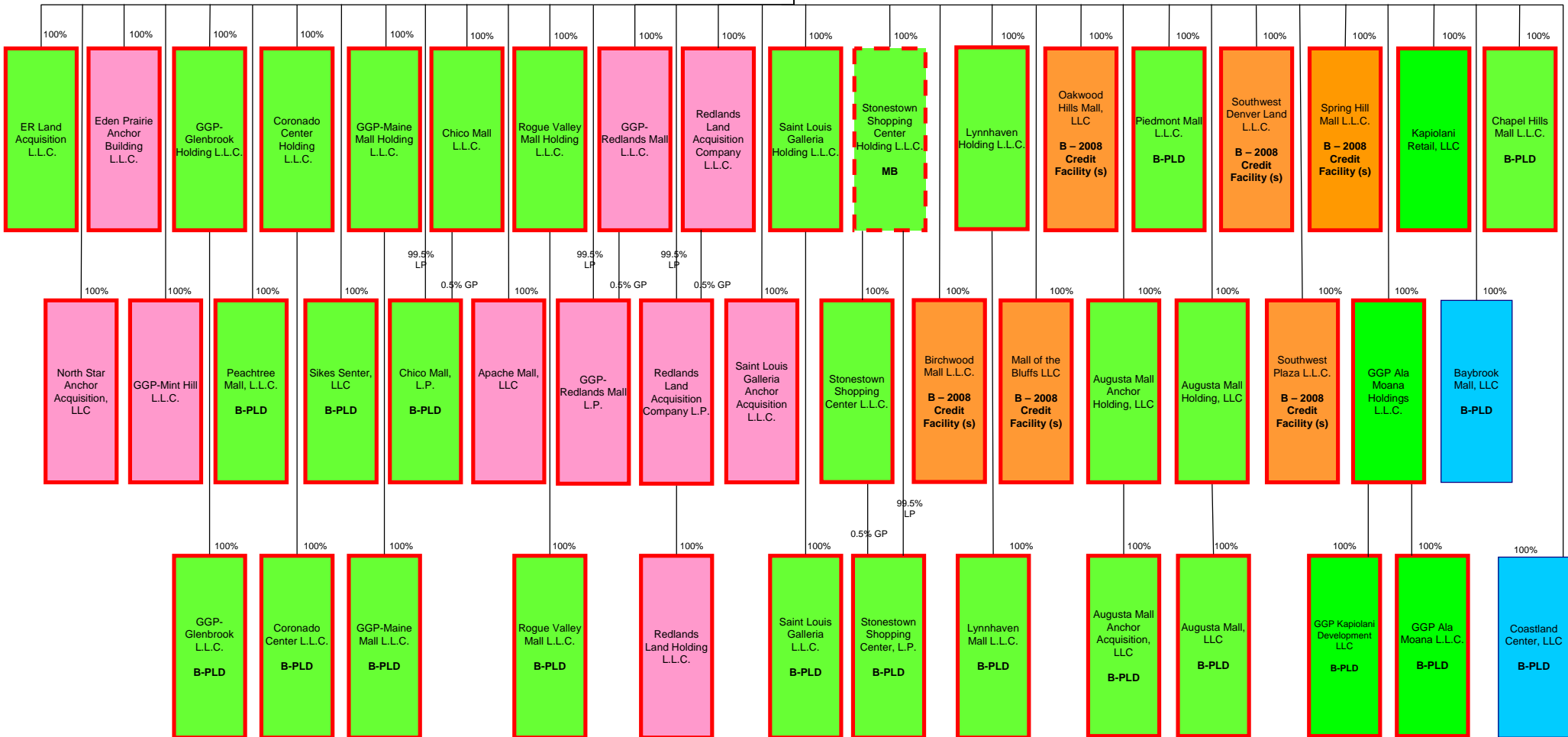


Chart I

*Entities with bold borders are Debtors filed on April 16, 2009
 Entities with dotted borders are Debtors filed on April 23, 2009

General Growth Properties, Inc.
 B+G – 2006 Credit Facility (u)
 G – 2008 Credit Facility (s)

GGPLP L.L.C.
 B – 2006 Credit Facility (u)
 G – 2008 Credit Facility (s)

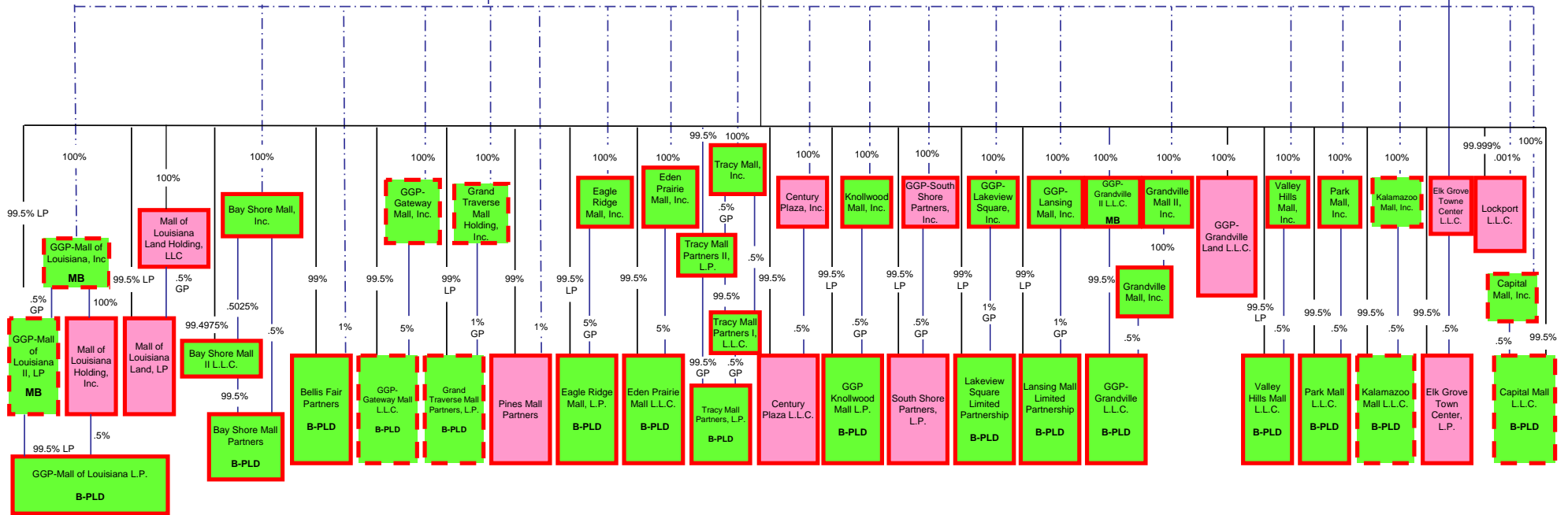


Chart J-1

*Entities with bold borders are Debtors filed on April 16, 2009
 Entities with dotted borders are Debtors filed on April 23, 2009

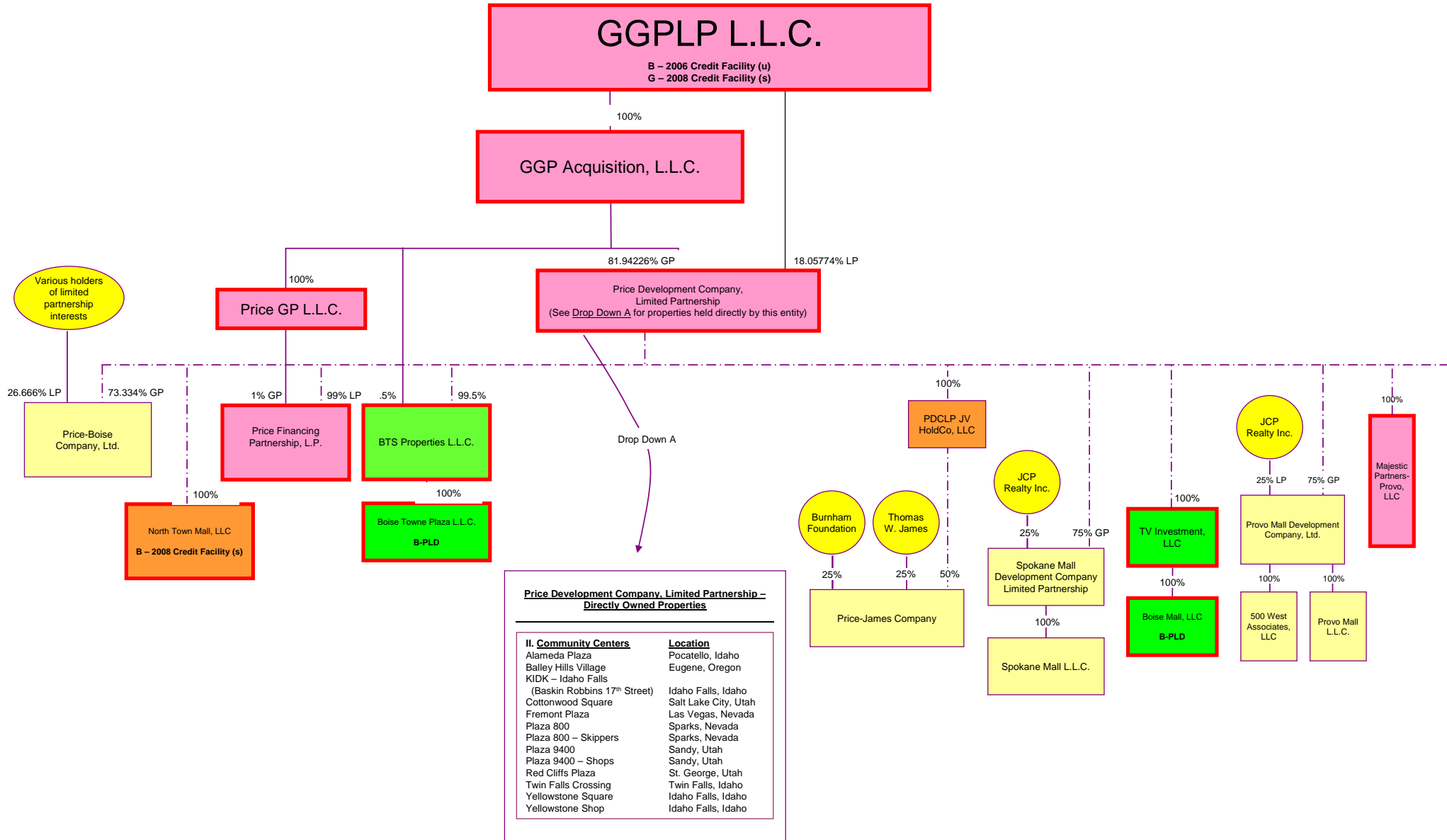


Chart J-2

*Entities with bold borders are Debtors filed on April 16, 2009
 Entities with dotted borders are Debtors filed on April 23, 2009

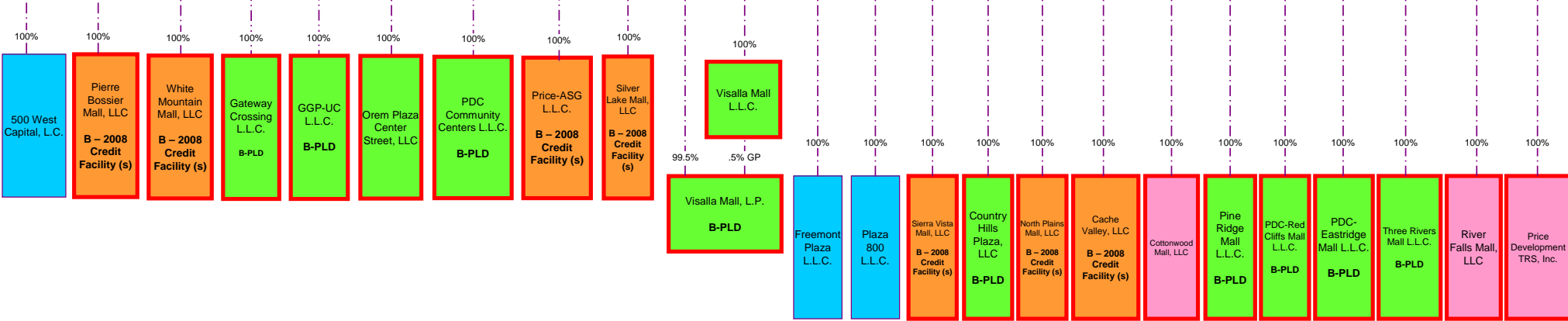


Chart K

*Entities with bold borders are Debtors filed on April 16, 2009
 Entities with dotted borders are Debtors filed on April 23, 2009

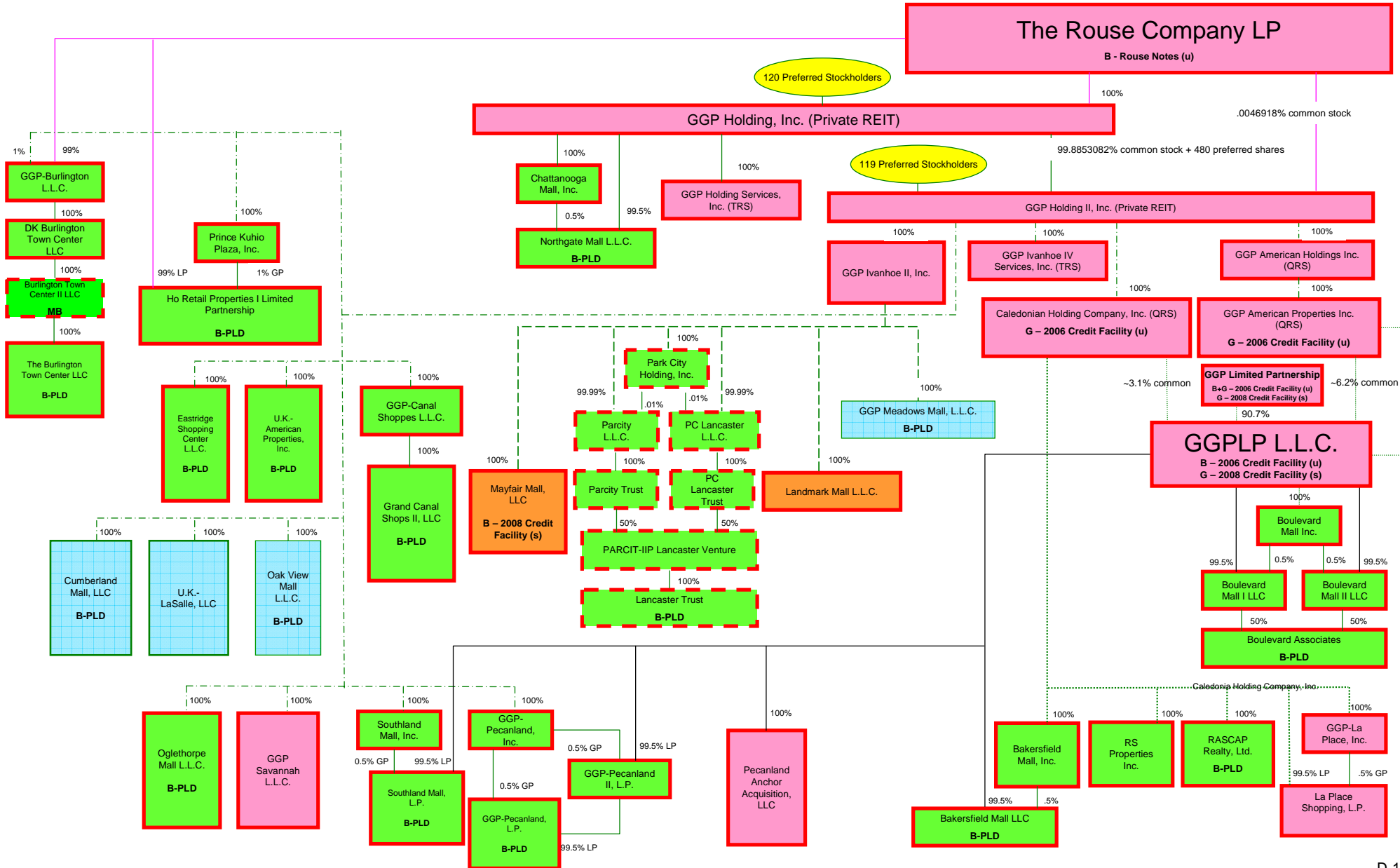


Chart L-2

*Entities with bold borders are Debtors filed on April 16, 2009
 Entities with dotted borders are Debtors filed on April 23, 2009

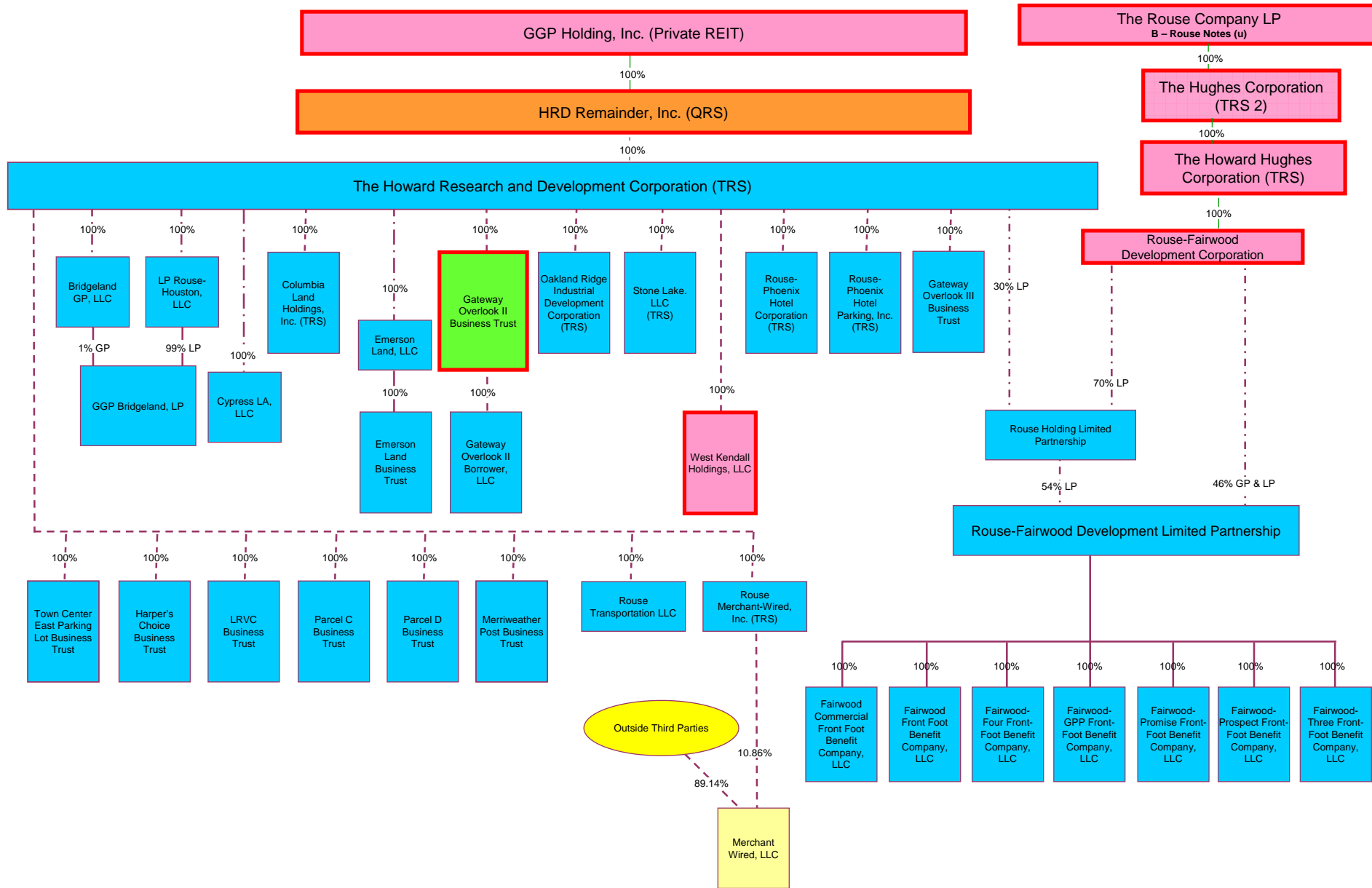
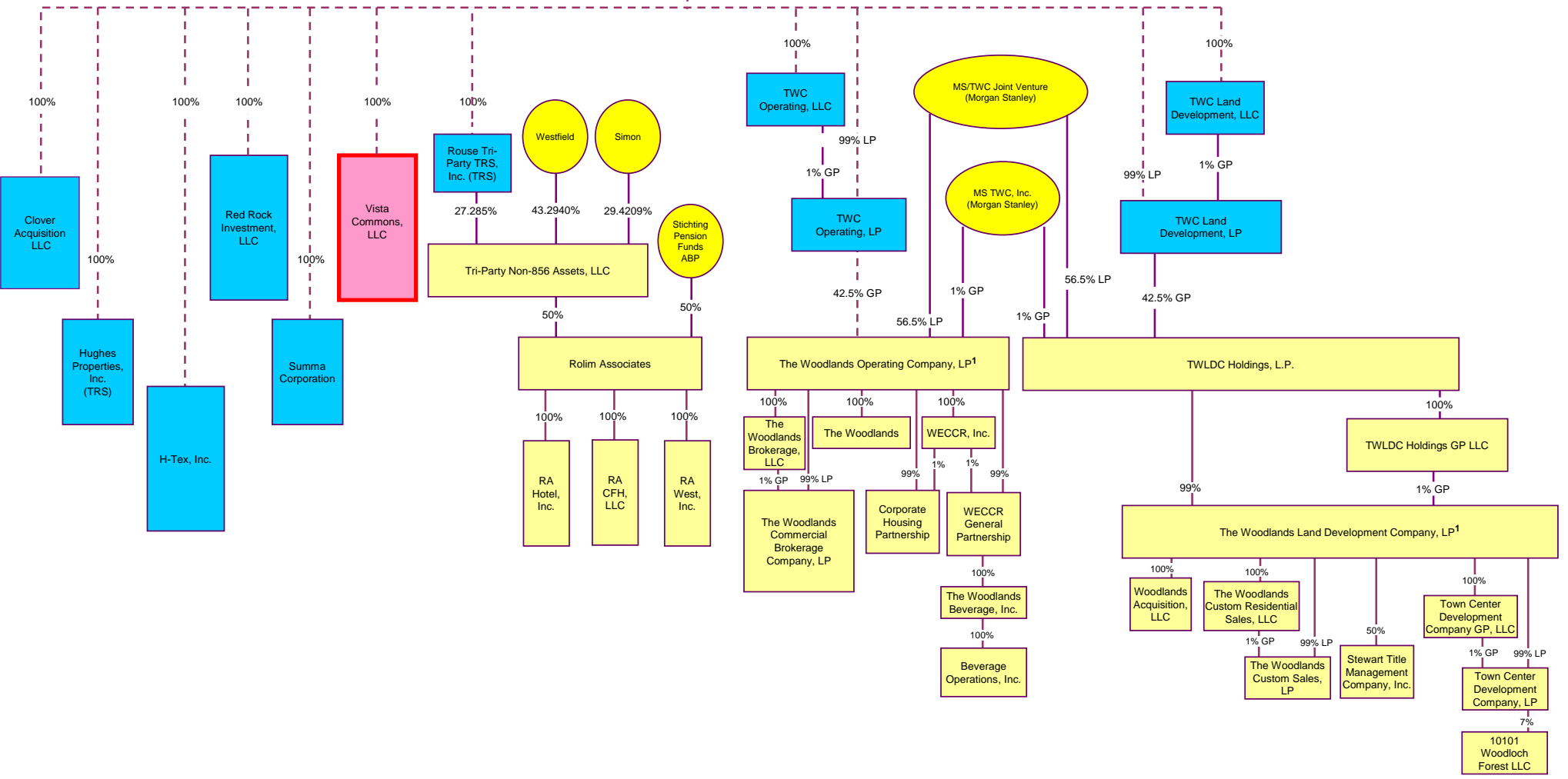


Chart M

*Entities with bold borders are Debtors filed on April 16, 2009
 Entities with dotted borders are Debtors filed on April 23, 2009

The Howard Hughes Corporation (TRS)



¹ GGP does not control this joint venture. For purposes of preparing this chart, GGP has relied on the most recent information provided by its joint venture partner regarding the joint venture's ownership percentages in its subsidiaries.

Chart N-1

*Entities with bold borders are Debtors filed on April 16, 2009
 Entities with dotted borders are Debtors filed on April 23, 2009

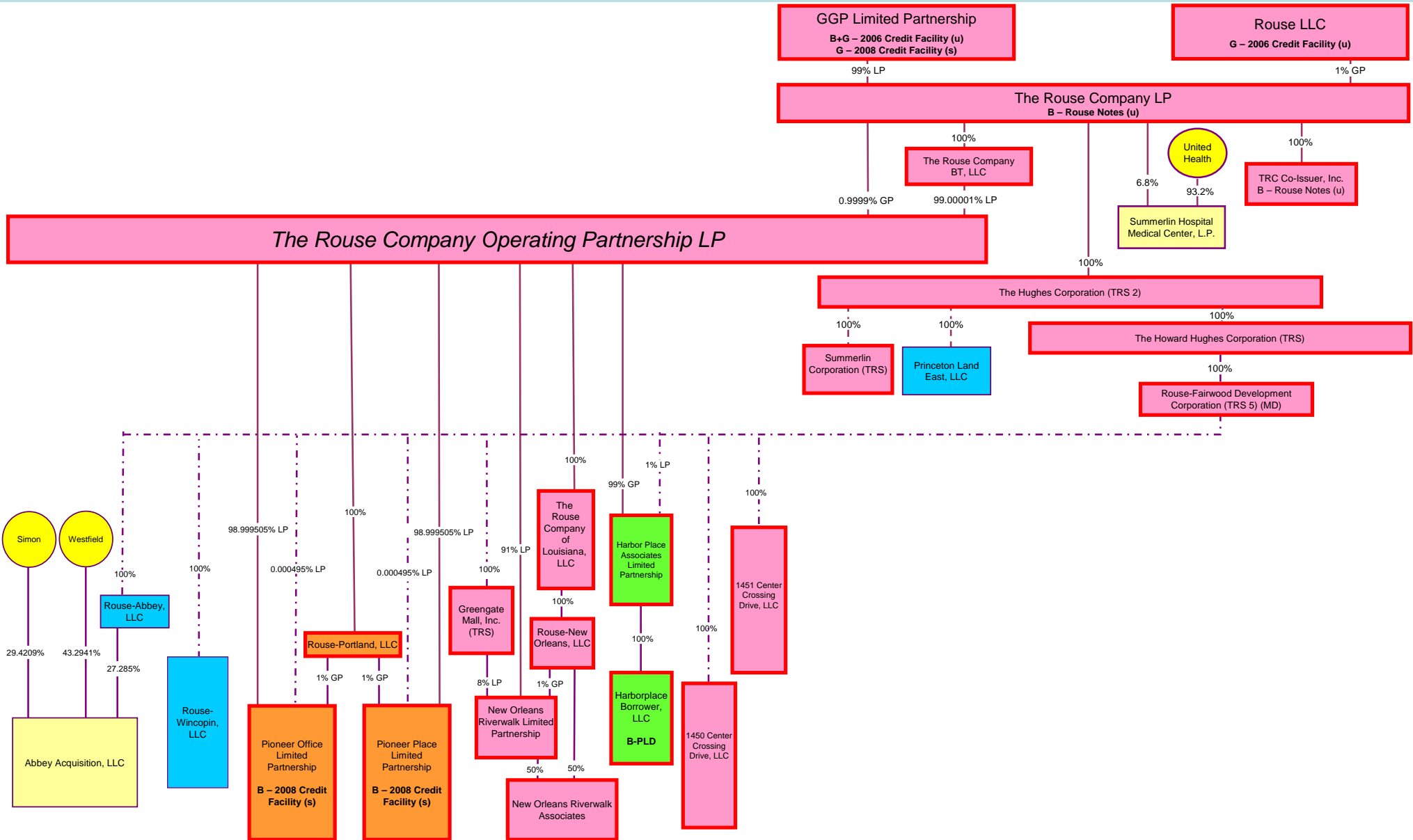


Chart N-2

*Entities with bold borders are Debtors filed on April 16, 2009
 Entities with dotted borders are Debtors filed on April 23, 2009

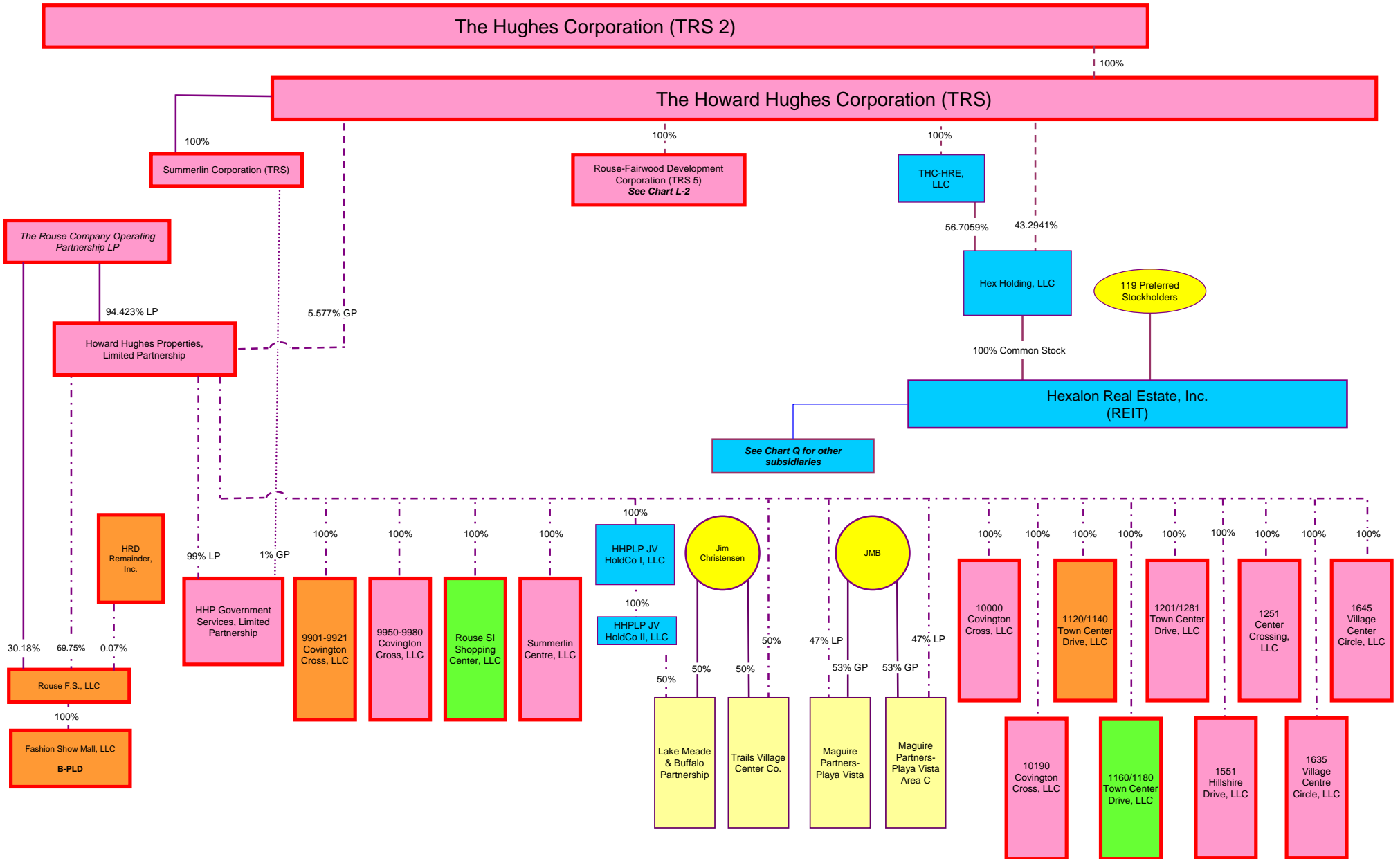


Chart P-2

*Entities with bold borders are Debtors filed on April 16, 2009
 Entities with dotted borders are Debtors filed on April 23, 2009

The Rouse Company Operating Partnership LP

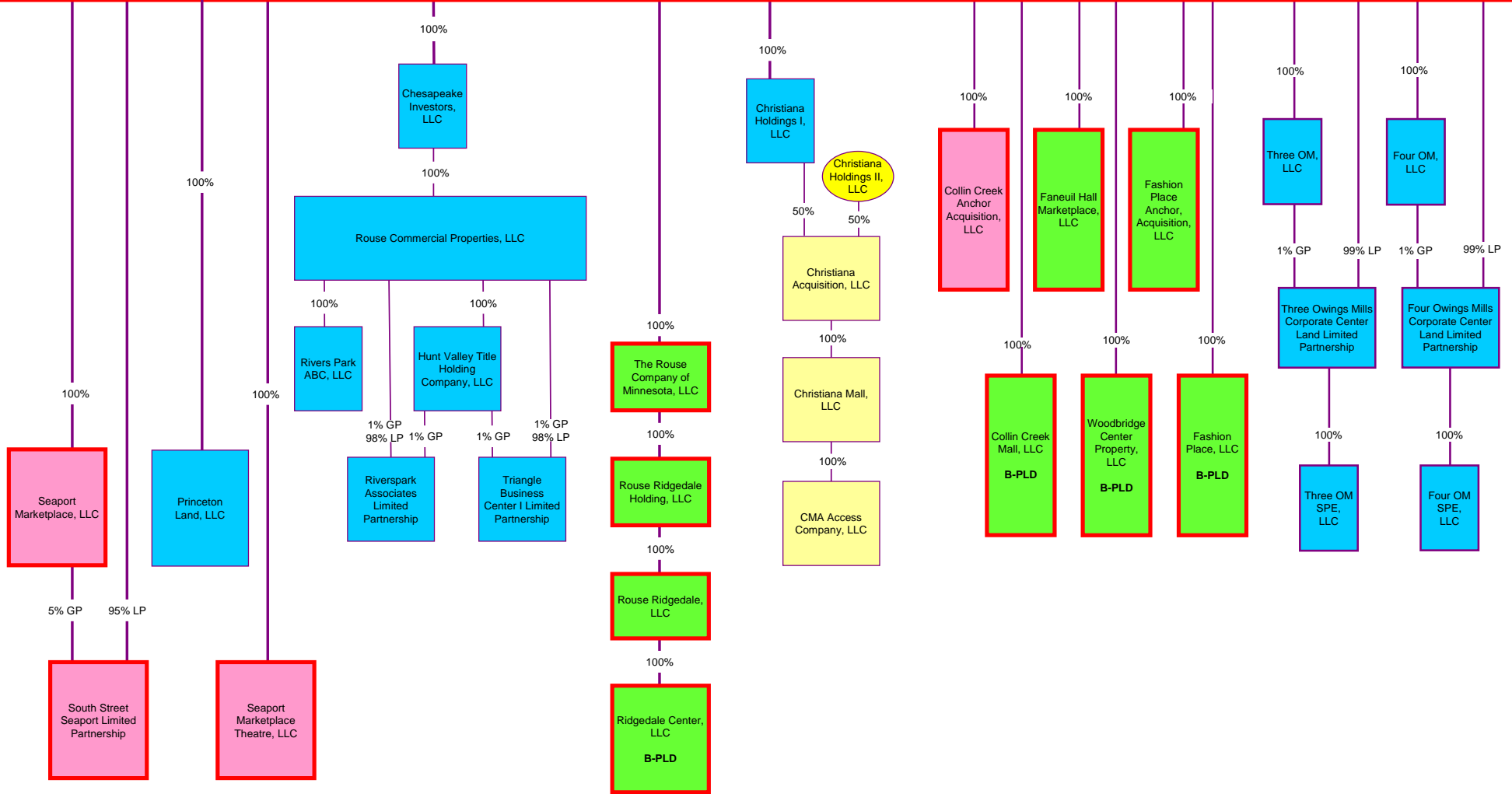


Chart P-3

*Entities with bold borders are Debtors filed on April 16, 2009
 Entities with dotted borders are Debtors filed on April 23, 2009

The Rouse Company Operating Partnership LP

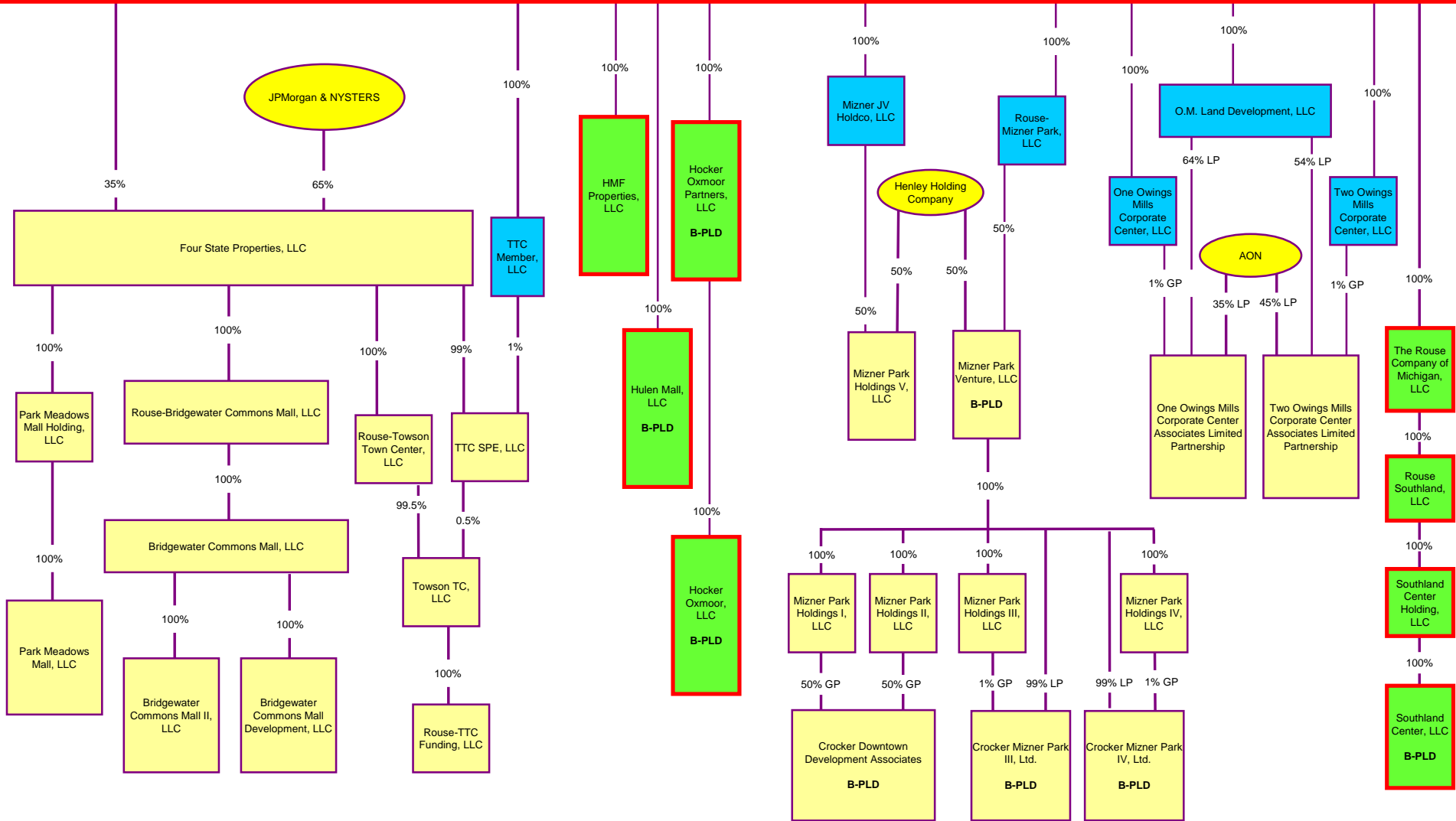
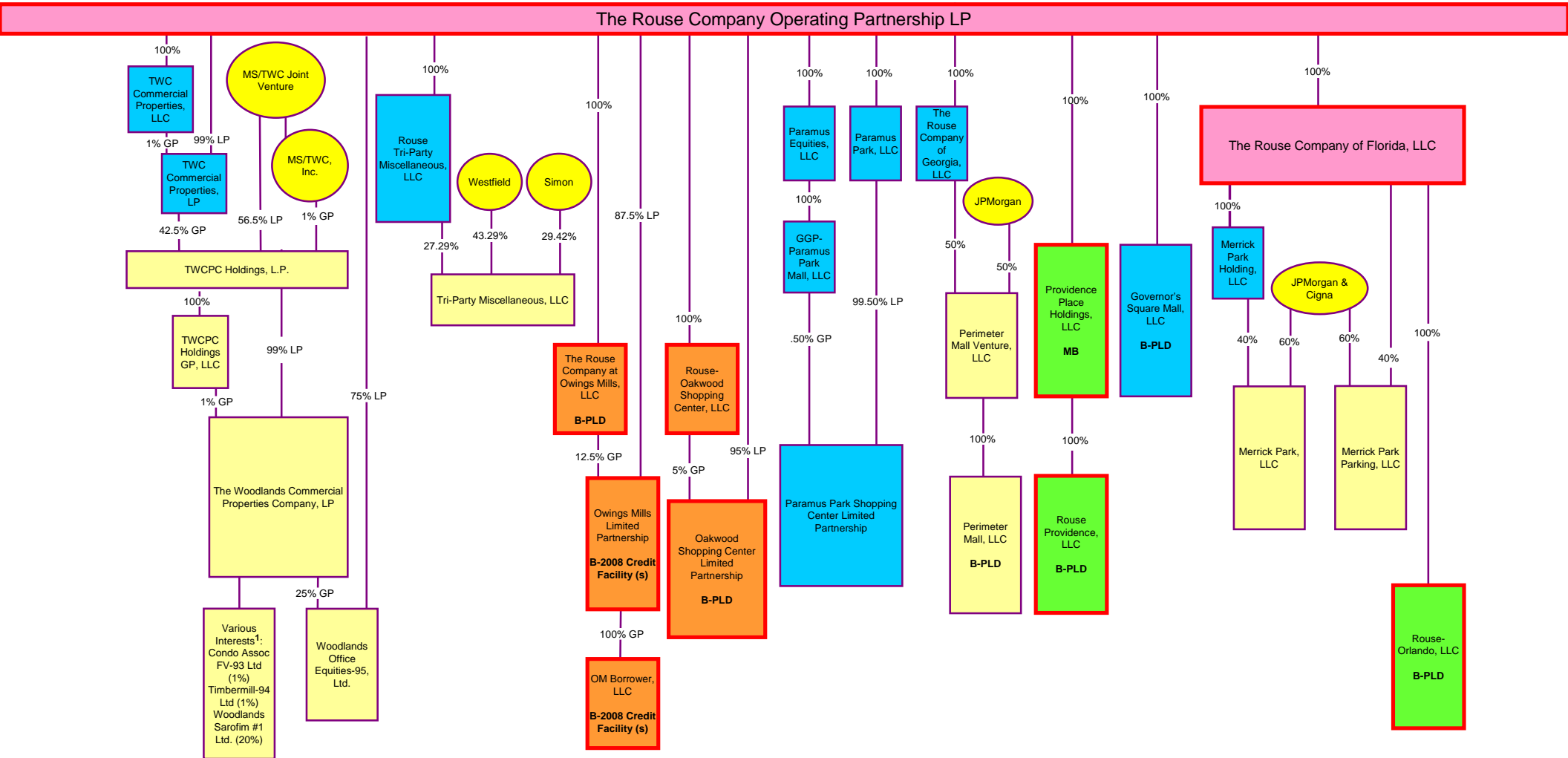


Chart P-4

*Entities with bold borders are Debtors filed on April 16, 2009
 Entities with dotted borders are Debtors filed on April 23, 2009



¹ GGP does not control this joint venture. For purposes of preparing this chart, GGP has relied on the most recent information provided by its joint venture partner regarding the joint venture's ownership percentages in its subsidiaries.

Chart P-5

*Entities with bold borders are Debtors filed on April 16, 2009
 Entities with dotted borders are Debtors filed on April 23, 2009

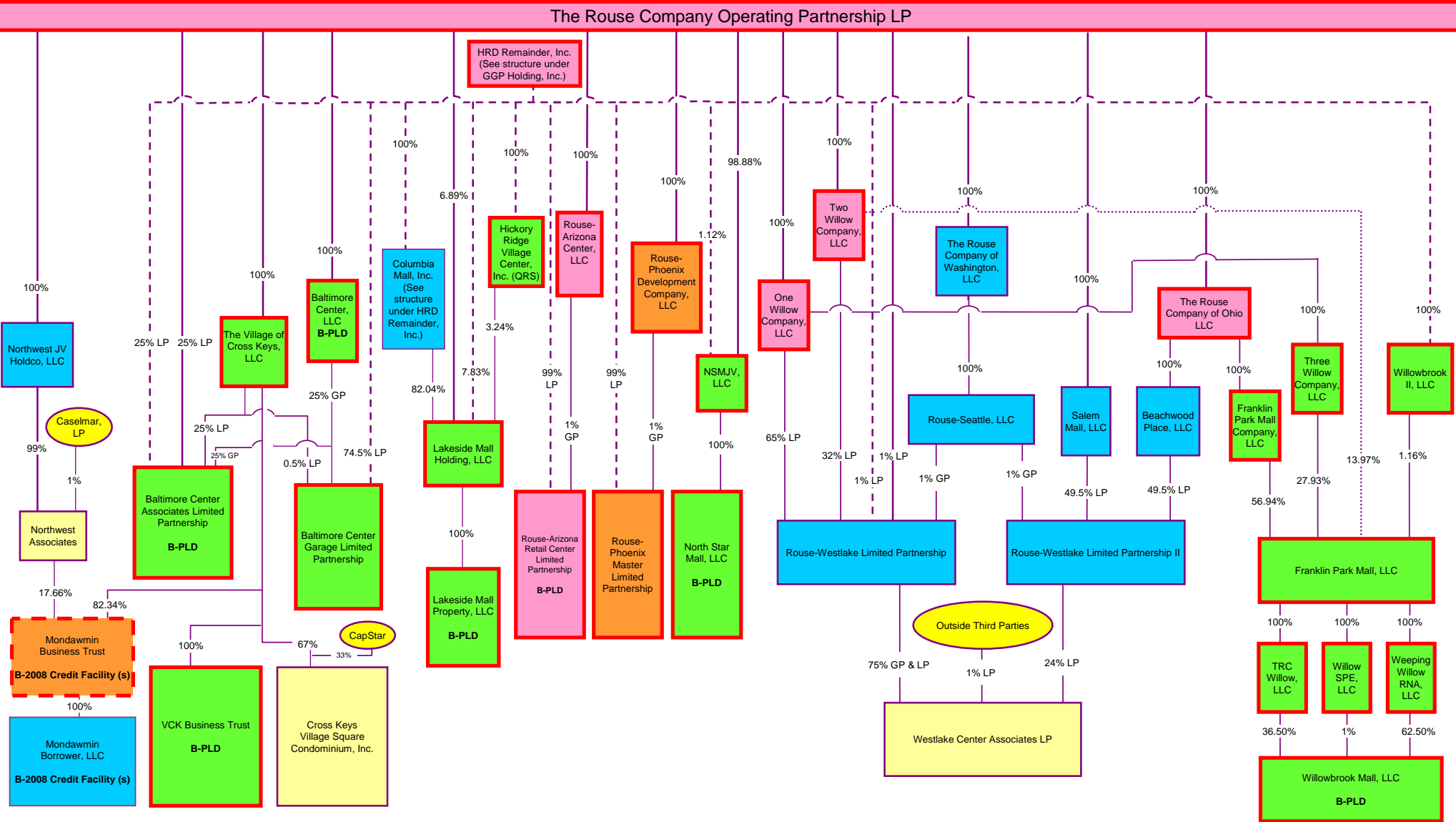


Chart P-6

*Entities with bold borders are Debtors filed on April 16, 2009
 Entities with dotted borders are Debtors filed on April 23, 2009

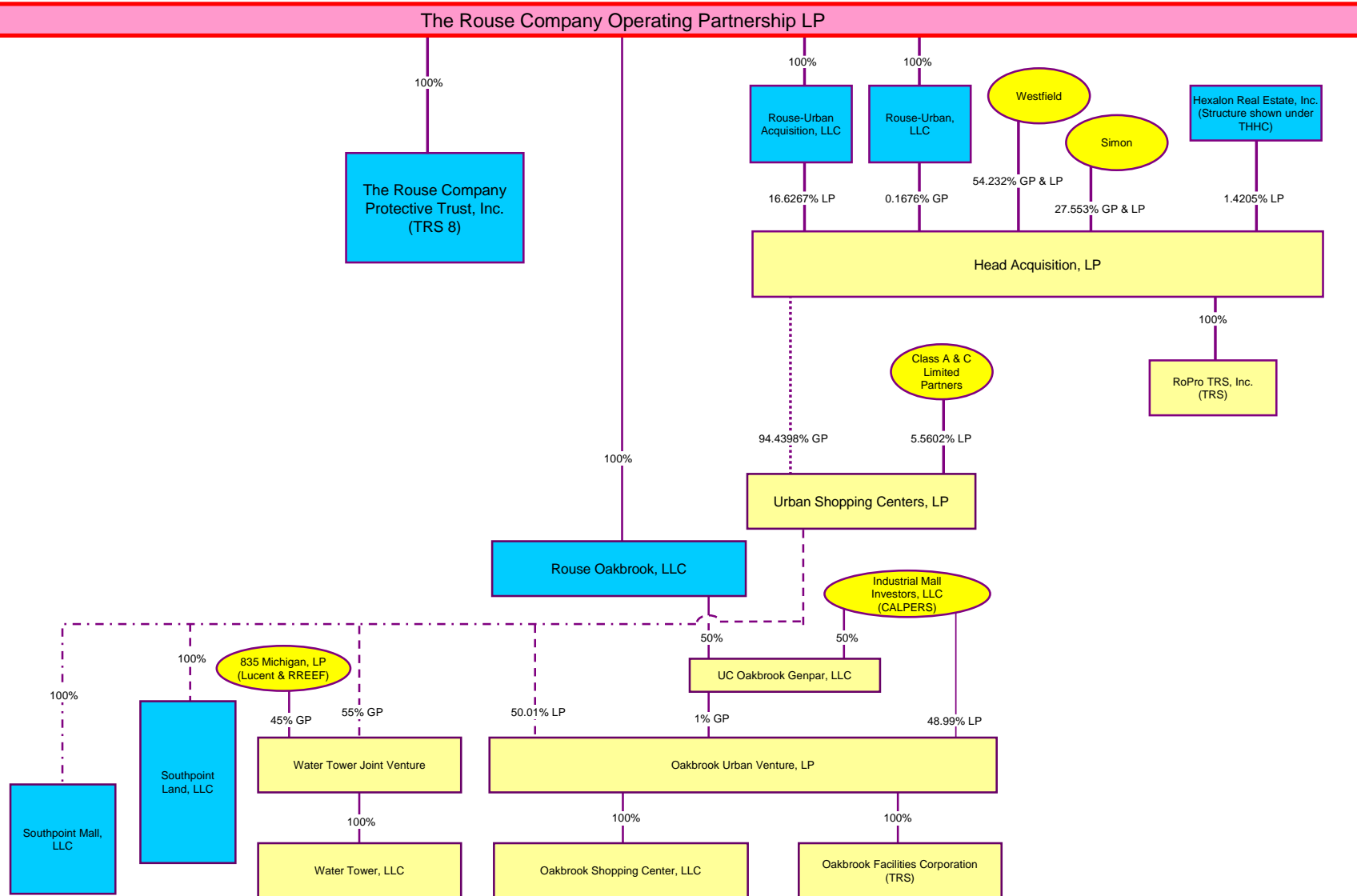


Chart Q

*Entities with bold borders are Debtors filed on April 16, 2009
 Entities with dotted borders are Debtors filed on April 23, 2009



99.80%

0.20%

